



# MaxQ 8000 Incubated and Refrigerated Stackable Shakers

## Maximizes flexibility and production capability in a convenient stackable design

- Units can be stacked two to three high for space savings with a speed range of 25 to 400 rpm  $\pm 1$  rpm
- HEPA filter evenly distributes air inside the chamber and reduces cross contamination improving culturing conditions; rated at 95% efficient at 0.3 microns for entrapment of airborne particles
- Ergonomically designed fold down door and a platform that slides out 100% with a maximum platform height of 61" (154.9 cm) when stacked three units high improves sample handling
- Stacking kit is FREE with every unit
- User interface displays both set and actual run conditions to simplify programming and prevent entry error
- Crevice-free stainless steel interior with coved corners and built-in drain keeps spills within work area and promotes easy cleaning
- All maintenance can be handled from the front of the unit without having to move or unstack the shakers
- Chamber is tall enough to accommodate 2L Erlenmeyer flasks
- Standard remote alarm contacts allow convenient monitoring of alarm conditions from another location

### Applications

- Growth of bacteria or yeast
- Dissolution studies
- Staining and destaining of electrophoresis gels
- Extractions
- Protein expression
- Growth of insect cells
- Hybridizations
- Protein purification



# Ordering Information

Select the right shaker for your needs and customize by selecting either a Universal Platform or a Dedicated Platform.

## MaxQ 8000 Shaker

Shaker Options	Speed Range (rpm)	Orbit Diameter In. (cm)	Max. Load Lb. (kg)	Temperature Range and Accuracy	Temperature Uniformity	Overall Dimensions/ Chamber Dimensions Inches (cm)			Shipping Weight Lb. (kg)	Model No. 120V, 50/60 Hz	Model No. 240V, 50/60 Hz
						L	W	H			
<b>MaxQ 8000 – Stackable Incubated Shaker</b>											
Digital	25–400 ±1	1.0 (2.54)	35.5 (16.1)	10°C above ambient to 60°C ±0.15°C at 37°C in flask	±0.3°C at 37°C in flask	33.3 (84.6)/ 21 (53.3)	46.5 (118.1)/ 22 (55.9)	25 (63.5)/ 27 (68.6)	658 (298.5)	SHKE8000	SHKE8000-1CE
<b>MaxQ 8000 – Stackable Incubated and Refrigerated Shaker</b>											
Digital	25–400 ±1	1.0 (2.54)	35.5 (16.1)	20°C below ambient to 60°C ±0.15°C at 37°C in flask	±0.3°C at 37°C in flask	33.3 (84.6)/ 21 (53.3)	56.5 (143.5)/ 22 (55.9)	25 (63.5)/ 27 (68.6)	723 (328)	SHKE8000-7	SHKE8000-8CE

## Platforms

Maximize flexibility by choosing your platform and selecting a mixture of clamps.

MaxQ 8000				Model No.	
Platforms	Universal Platforms	Maximum flexibility for using a mix of different size labware on a single platform. See Universal Clamp Guide for clamp capacities. Purchase clamps separately.	29.5 x 18" (74.9 x 45.7 cm)	Platform without Clamps	238061
	Dedicated Platforms	Clamps come installed to provide maximum capacity.	29.5 x 18" (74.9 x 45.7 cm)	Platform with Clamps	See Dedicated Platforms on p. 25
Clamps	Mix and match clamps for your Universal Platform.			See Universal Clamp Guide below	

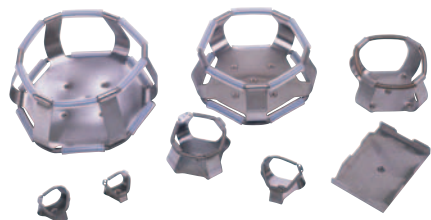


## Universal Clamp Guide

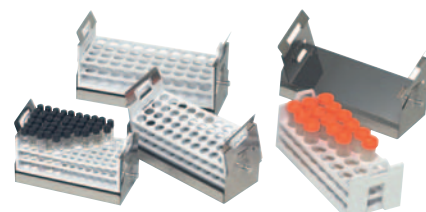
Mix and match to customize the Universal Platform for your unique needs. Clamps sold as individual units.

Clamp	Model No.	Clamp Capacity Guide
Max. clamp capacity of vessels for the Universal Platform		
Flask Clamp Starter Kit, includes (1) microplate clamp, (2) 25 ml flask clamps, (2) 50 ml flask clamps, (2) 125 ml flask clamps, (4) 250/300 ml flask clamps, (4) 500 ml flask clamps, (2) 1L flask clamps, (2) 2L flask clamps and replacement screws	236099	–
Microplate	236025	18
25 ml Erlenmeyer Flask	236010	91
50 ml Erlenmeyer Flask	236011	91
125 ml Erlenmeyer Flask	236012	39
250/300 ml Erlenmeyer Flask	236013	30
500 ml Erlenmeyer Flask	236014	24
1L Erlenmeyer Flask	236015	12
2L Erlenmeyer Flask	236016	11
2800 ml Fernback Flask	236019	6
Adhesive Flask Mat, 9 x 9" (23 x 23 cm)	300349 <sup>3</sup>	–
Replacement Screws: (50) #10-24 x 5/16" countersink Phillips head screws for clamps and (6) 1/4-20 x 3/4" countersink flat head socket for platforms and (2) 1/4"-20 x 1-1/2" hex socket set screws	194046	–
<b>Universal Test Tube Rack with Holder (Must purchase desired test tube rack in addition to holder)</b>		
Universal adjustable angle test tube rack holder	600088	–
Test tube rack, 72 places, 10–13 mm (3–7 ml) tubes	950040 <sup>2</sup>	5 angled
Test tube rack, 40 places, 16–20 mm (10–20 ml) tubes	950060 <sup>2</sup>	4 angled
Test tube rack, 40 places, 21–25 mm (30 ml) tubes	600074 <sup>2</sup>	4 angled
Test tube rack, 24 places, 26–30 mm (50 ml) tubes	600075 <sup>2</sup>	4 angled
<b>Adjustable Test Tube Racks with Holder (Includes one test tube rack)</b>		
Adjustable angle test tube rack holder with test tube rack, 72 places, 10–13 mm (3–7 ml) tubes	600076 <sup>4</sup>	5 angled
Adjustable angle test tube rack holder with test tube rack, 40 places, 16–20 mm (10–20 ml) tubes	600077 <sup>4</sup>	4 angled
Adjustable angle test tube rack holder with test tube rack, 40 places, 21–25 mm (30 ml) tubes	600078 <sup>4</sup>	4 angled
Adjustable angle test tube rack holder with test tube rack, 24 places, 26–30 mm (50 ml) tubes	600079 <sup>4</sup>	4 angled
<b>Vial/Tube Inserts</b>		
Pack of 5 vial/tube inserts, perforated for (3) 50 ml tubes, (3) 20 ml tubes, and (8) 1.5–2 ml vials (Requires 1L Erlenmeyer Flask Clamp 236015)	161033	3 x 50 ml tubes, 3 x 20 ml tubes and 8 x 1.5/2.0 ml vials
<b>Microplate Rack Inserts</b>		
Microplate rack insert for standard plates, 3 shelves (Requires Universal adjustable angle test tube rack holder)	600090	7 racks, 63 plates
Microplate rack insert for deep-well plates, 2 shelves (Requires Universal adjustable angle test tube rack holder)	600089 <sup>1</sup>	5 racks, 30 plates
<b>Replacement Screws</b>		
Replacement Screws (50) #10-24 x 5/16" countersink Phillips headscrews for mounting tube holders to platform	194024	–

<sup>1</sup>Shaken at a 15 degree angle <sup>2</sup>Requires 11-676-039 or a dedicated adjustable angle test tube rack holder of the corresponding size <sup>3</sup>Can be cut to fit, reusable <sup>4</sup>Includes rack holder



The universal test tube rack holder can be adjusted to fit any of the four available test tube rack sizes. Universal design requires the separate purchase of a test tube rack.

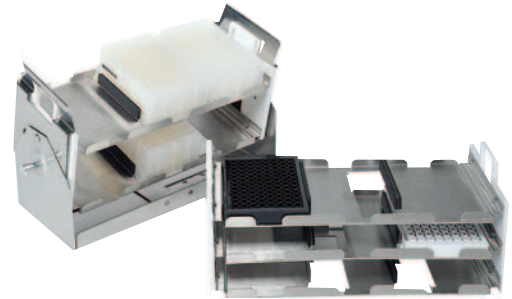


Adjustable test tube rack holders can be used only with their corresponding rack size. This design includes one test tube rack each.

## Dedicated Platforms with Clamps

Maximize capacity by choosing your platform with pre-installed clamps.

Clamps come installed to provide maximum capacity			
Platform Size	Description	Capacity	Model No.
29.5 x 18" (74.9 x 45.7 cm)	25 ml Erlenmeyer Flask	91	238066
	50 ml Erlenmeyer Flask	91	238067
	125 ml Erlenmeyer Flask	61	238068
	250/300 ml Erlenmeyer Flask	30	238069
	250/300 ml Erlenmeyer Flask	40	238070
	500 ml Erlenmeyer Flask	24	238071
	1L Erlenmeyer Flask	15	238072
	2L Erlenmeyer Flask	12	238073
	2800 ml Fernbach Flask	6	238074



### Microplate Rack Inserts

Our Microplate Rack Inserts are available for the Dedicated Adjustable Angle Test Tube Rack Holder (50 ml)-No. 600079 and the Universal Adjustable Angle Test Tube Rack Holder-No. 600088. You can increase your microplate shaking capacity, shake deepwell format plates at an angle, and remove many plates from the shaker at once for quick and easy transport to your benchtop.

## Optional Accessories

MaxQ 8000		Model No.
Stand for one Stackable Shaker 45.5"W x 29.6"H x 35.3"D (115.6 x 75.2 x 89.7 cm); 30.6" (77.7 cm) max. height with leveling feet extended		194222
Stand for two Stackable Shakers 45.5"W x 11.8"H x 30.5"D (115.6 x 30.0 x 77.5 cm); 12.8" (32.5 cm) max. height with leveling feet extended		194223
Door Glass Cover Prevents light from entering through window		194224
7 Day Recorder 0–100°C, 6"	115V, 50/60 Hz	201126
	220V, 50/60 Hz	201127
Chart Paper, 50 sheet per box		197075
HEPA filter, replacement		760440
Sensaphone® Telephone Dialing System Alarm system that will notify user via the telephone	Four Channel, 120V/60 Hz	400047
	Eight Channel, 120V/60 Hz	400134



### Stands for Stackable Shakers

The single and dual shaker stands place the stackable shakers at a convenient working height. No stand is required for units stacked three high.



### Vial/Tube Inserts for 1 Liter flask Clamps

Flexible, reusable, closed-cell foam Vial/Tube Inserts are ideal for shaking a mix of tube and vial sizes in temperature ranges up to 70°C (158°F). The insert fits snugly into a 1 liter flask clamp, repels spills, and is easy to clean.